

# MV. TENGGARA EXPLORER

33.40 meters multi purpose vessel

## GENERAL DATA

Built	: 2007
Shipyard	: SBF Australia
Flag	: Indonesia
Port of Registry	: Bena
Call Sign	: YB 5308
IMO No	: 9465904
Class	: Built under BV Current Class ± A 100 Φ P
GT/NT	: 198 / 60
Length Over All	: 33.40 meters
Breadth	: 7.90 meters
Draught	: 1.80 meters
Aft Deck Area	: 32 sqm, free 26.40 sqm
Fore Deck Area	: 52 sqm, free 42.65 sqm

## NAVIGATION

Radar	: 1x JRC JMA 3300
Echo Sounder	: 1x JRC JFC 130HO
Plotter/GPS	: 1x Lorenz Magnum Pro
Magnetic Compass	: 1x Riviera BW2
Auto Pilot	: 1x TMQ AP-500
Radio Com	: 1x ICOM IC M801E 2x ICOM IC M304 3x ICOM ICM3A 2x GMDSS Samyung STV-160
EPIRB	: 1x GME MT-401T
SART	: 1x Kannad Rescuer
AIS	: Em-Track A200 Class A
Satellite Phone/Modem	: rental, subject to available unit

## SAFETY

- 4 x 15 person Inflatable Life Raft
- CO2 System fitted
- Smoke and Thermal detectors fitted
- Fire Hydrant and Hoses fitted



## MACHINERY

Main Engine	: 2 x 600 HP Caterpillar C18
Propulsion	: 2 x fixed pitch propellers
Generator	: 2 x Caterpillar C4.4, 86 KVA 1 x Caterpillar C2.2, 31 KVA
Bow Thruster	: 2 x Keypower KP16 w/ dedicated engine

## PERFORMANCE AND CAPACITY

Max Speed	: 15 knots
Max Operation Speed	: 13 knots
Fuel Consumption	: 3,525 L/24 hrs @ 13 knots 1,123 L/24 hrs @ 7 knots
Fuel Capacity	: 62,000 liters
Fresh Water Capacity	: 20,000 liters
Water maker capacity	: 5,000 litres/day

## LIFTING & PULLING EQUIPMENT

- Deck crane Tadano TM.2R503, capacity 3,000 kgs, with 25 meters wire.
- A frame 1,100kgs.
- Aft Main Hydraulic winch 1,500 meters 8 mm s/s wire. Max. 500 kg lift. With connection for conductor wire.
- Secondary aft Hydraulic winch 750 meters 8 mm s/s wire. Max 750 kg lift.
- Fore port side deck winch combo, deck tigger winch 30 meters 13 mm galvanized wire 1,500kg lift and deck capstan 2,000 kgs lift with side roller on starboard side.

## ACCOMMODATION (12 crew + 10 non crew)

- Desktop work area/lab
- 4x4 berth (double tier) cabins—16 persons
- 3x2 berth (double tier) cabins—6 persons
- 1 x dinette and galley

## Contact & Inquiry

PT. INDONUSA TENGGARA MARINE

Jalan Raya Pelabuhan Bena, Zona Marina,  
Denpasar—Indonesia 80222

Ph: +62 361 710004 ; Fax: +62 361 722236

Email : [info@indonusa-marine.net](mailto:info@indonusa-marine.net)

Website : [indonusa-marine.net](http://indonusa-marine.net)

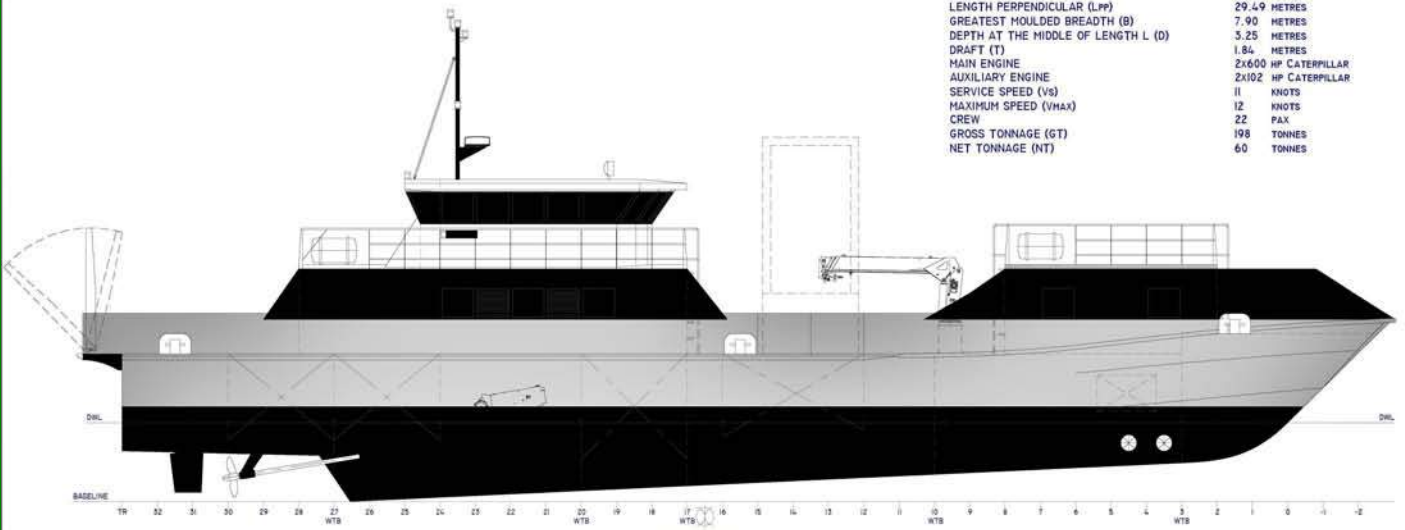


# MV. TENGGARA EXPLORER

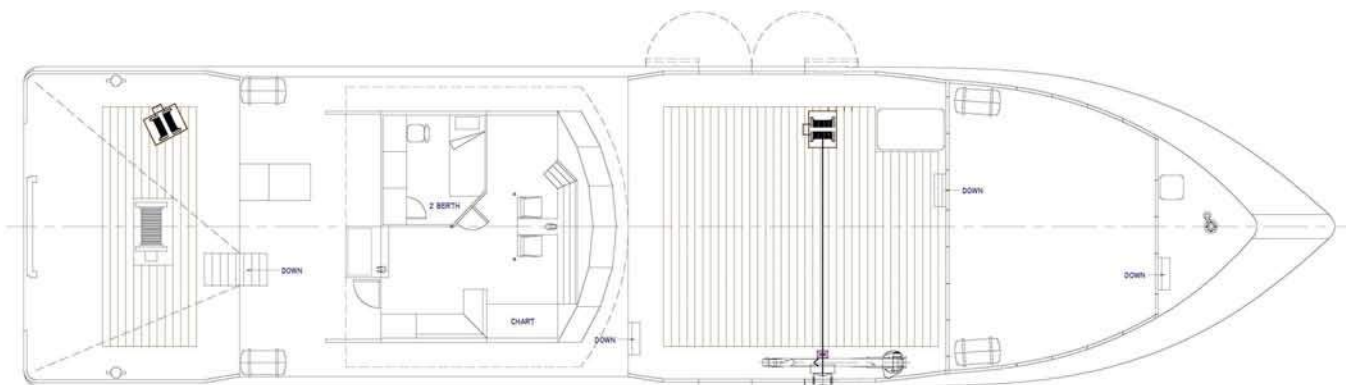
## GENERAL ARRANGEMENT

### PRINCIPAL DIMENSIONS

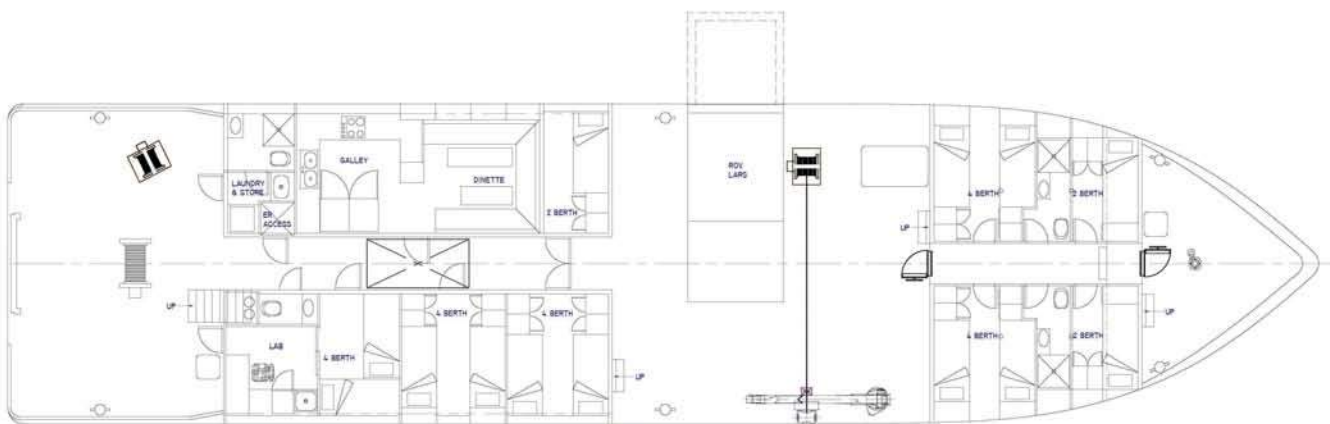
LENGTH OVER ALL (LoA)	33.40 METRES
LENGTH PERPENDICULAR (Lpp)	29.49 METRES
GREATEST MOULDED BREADTH (B)	7.90 METRES
DEPTH AT THE MIDDLE OF LENGTH L (D)	3.25 METRES
DRAFT (T)	1.84 METRES
MAIN ENGINE	2x600 HP CATERPILLAR
AUXILIARY ENGINE	2x102 HP CATERPILLAR
SERVICE SPEED (V <sub>S</sub> )	11 KNOTS
MAXIMUM SPEED (V <sub>MAX</sub> )	12 KNOTS
CREW	22 PAX
GROSS TONNAGE (GT)	198 TONNES
NET TONNAGE (NT)	60 TONNES



OUTBOARD PROFILE

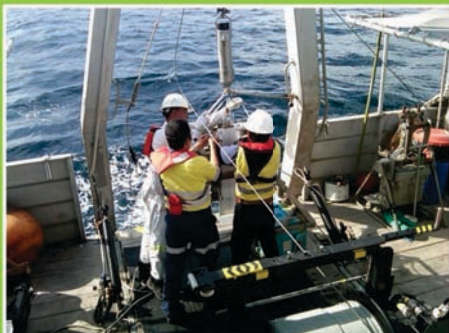


UPPER DECK PLAN



MAIN DECK PLAN

## INTERIOR AND FACILITY



**PT. INDONUSA TENGGARA MARINE**

Jalan Raya Pelabuhan Benoa, Zona Marina, Denpasar—  
Indonesia 80222

Ph: +62 361 710004 Fax: +62 361 722236

Email : [info@indonusa-marine.net](mailto:info@indonusa-marine.net)

Website : [indonusa-marine.net](http://indonusa-marine.net)