

MV.TENGGARA RANGER

32 meters multi purpose vessel

GENERAL DATA

Built : 2015
 Shipyard : PT.Bintang Timur Samudra
 Flag : Indonesia
 Registry : Benoa
 Call Sign : YB 5464
 IMO no : 9807566
 Class : Bureau Veritas | ✘Hull Mach
 Special Service - Survey Vessel
 GT/NT : 231 / 70
 LOA : 32.40 meters
 Breadth : 8.50 meters
 Draught : 2.00 meters

SAFETY

Inflatable Life Raft 2 x 20 person
 CO2 System fitted
 Smoke & Thermal detectors fitted
 Structural Fire Protection
 Fire Hydrant and Hoses fitted

NAVIGATION

Radar : 1x SIMRAD Halo 3 pulse
 compression
 Echo Sounder : 1x SIMRAD BSM-3
 Navtex : Furuno NX-700A
 Plotter / GPS : 1x SIMRAD NSO.Evo2
 Magnetic Compass : 1x Riviera
 Auto Pilot : 1x Simrad AP70
 Radio Com : 1x HF ICOM IC-M802
 2x VHF Simrad RS35
 2x VHF Simrad HH36
 EPIRB : 1x Simrad EG70 406mHZ
 SART : 1x Simrad SA70 GMDSS
 Search light : 2x DHR 210



MACHINERY

Main Engine : 2 x Caterpillar C18 "A" (600 hp @ 1800 rpm)
 Gearboxes : 2 x ZF 550 marine reversing
 Propulsion : 2 x fixed pitch 4 bladed NiAlBr propellers
 Gen Sets : 2 x Caterpillar C4.4 86kva 50Hz
 1 x Caterpillar C2.2 28kva 50Hz
 Bow thrusters : 2 x Keypower KP16A

PERFORMANCE & CAPACITY

Maximum speed : 12 knots
 Fuel Consumption : 3,525 litres / 24 hours @ 80% MCR
 1,123 litres/ 24 hours @ 7 knots
 Fuel Capacity : 45,000 litres
 Fresh Water Capacity : 15,000 litres
 Ballast water : 60,000 litres

SURVEY EQUIPMENT & FACILITY

1x "A" Frame SWL 2000 kgs
 1x Deck Crane Palfinger PK18500M(A) 8000kgs
 1x Kongsberg EA400 Hydrographic single beam transducer
 1x Lab room
 1x designated ROV Control room
 2x core winch

ACCOMMODATION

3 x 4 berth (double tier) cabin at main deck
 2 x 2 berth (double tier) cabin at lower deck
 1 x 4 berth (double tier) cabin at lower deck
 1x dinette
 1x galley
 1x laundry c/w dryer combo unit

INQUIRY AND CONTACT

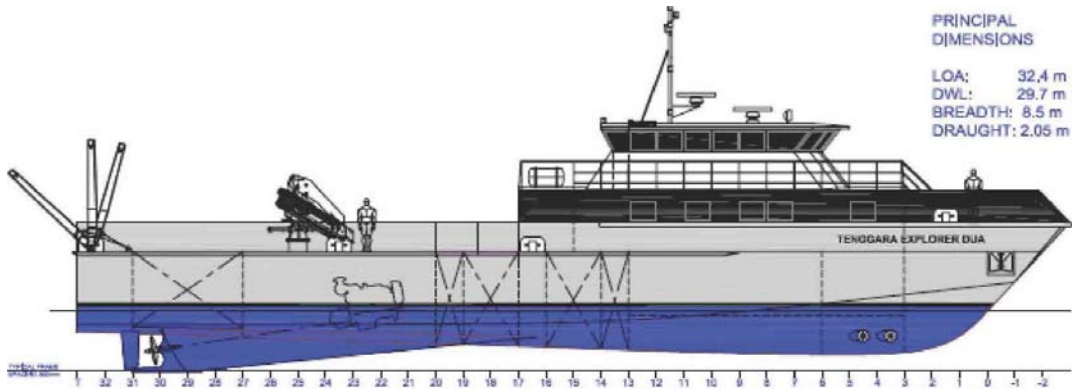
PT.INDONUSA TENGGARA MARINE
 Jl. Raya Pelabuhan Benoa, Zona Marina, Bali - Indonesia
 Ph : +62 361 710004 - Fax : +62 361 722236
 Email : info@indonusa-marine.net



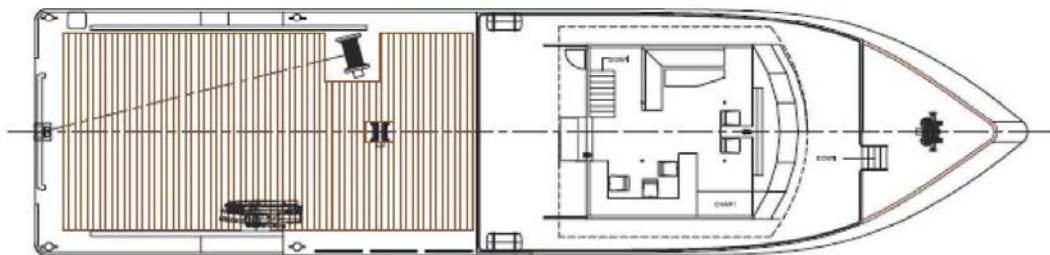
GENERAL ARRANGEMENT

PRINCIPAL DIMENSIONS

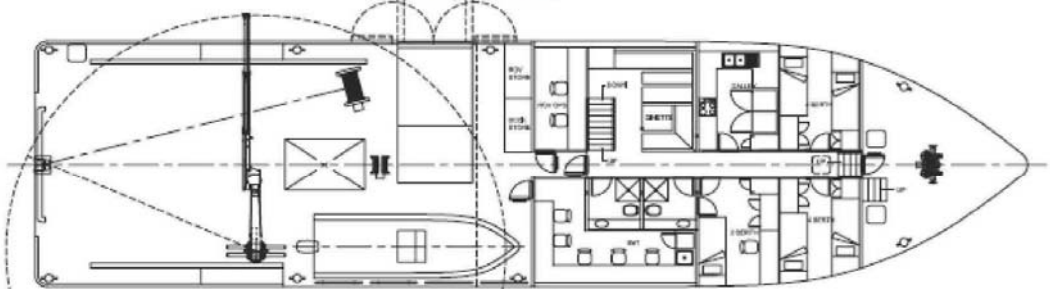
LOA: 32,4 m
DWL: 29,7 m
BREADTH: 8,5 m
DRAUGHT: 2,05 m



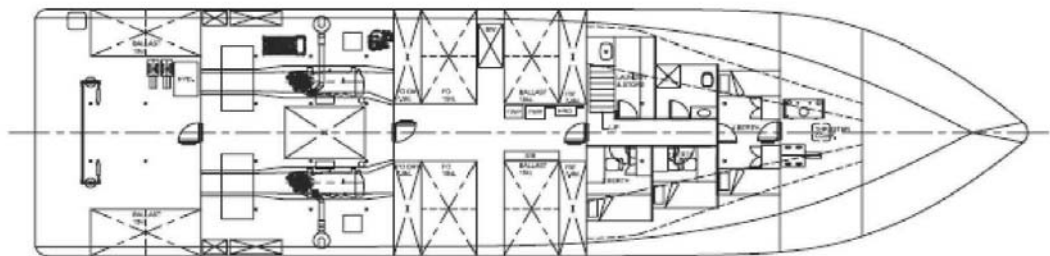
OUTBOARD PROFILE



UPPER DECK



MAIN DECK



LOWER DECK

INQUIRY & CONTACT

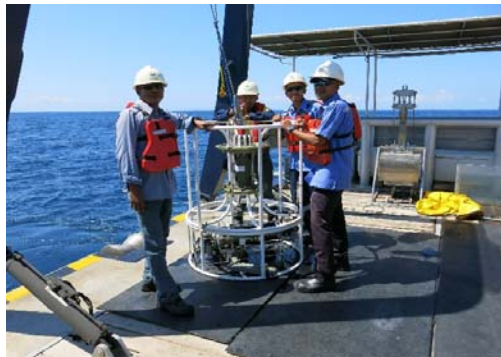
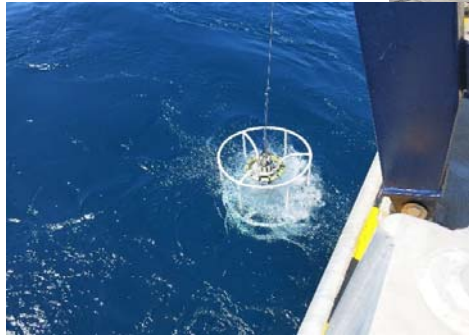
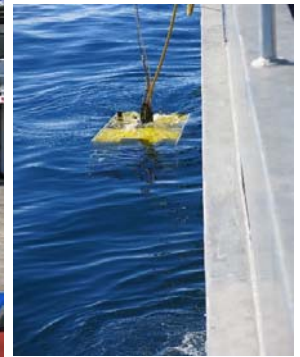
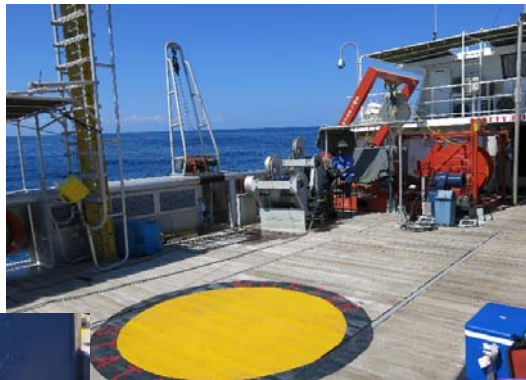
PT.INDONUSA TENGARA MARINE

Jl.Raya Pelabuhan Benoa, Zona Marina, Bali - Indonesia

Ph: +62 361 710004 Fax: +62 361 722236



INTERIOR & FACILITIES



INQUIRY & CONTACT
PT.INDONUSA TENGGARA MARINE
Jl.Raya Pelabuhan Benoa, Zona Marina, Bali - Indonesia
Ph: +62 361 710004 Fax: +62 361 722236

